



Six Powerful Models

Table of Contents - Color Coded Sections

	WV-1/4™	<i>2" - 4" Lines for Cart & Trailer Jetters</i>
	WT-3/8™	<i>3" - 6" Lines for Cart & Trailer Jetters</i>
	WS-1/2™ & Accessories	<i>4"-8" Lines for Trailer Jetters WARTHOG Centralizers & Accessories</i>
	WH-1/2™ WH-3/4™	<i>Two WH™ Models for 6" - 18" Lines</i>
	WG-1™ WD 1-1/4™	<i>8" - 36" Lines for Municipal Jetters</i>

The WARTHOG® Family of Sewer Nozzles

- Controlled Rotation Cleans Better**
With our patented engineering, jets clean pipes more effectively at a controlled and more productive speed.
- Easy Field Maintenance**
Customers spend an average of only 15 minutes per year replacing the seals. Step by step instructions make it simple.
- Fewer Jets Deliver More Power**
You get more power per jet resulting in superior root cutting and unmatched wall cleaning.
- Replaceable Nozzle Tips**
Hard hitting **StoneAge®** Attack Tip™ nozzles are field replaceable and keep your tool performing at its best.

All these features make it possible to cut roots, clear grease, ice blockages and remove hard mineral deposits with just one tool!

WARTHOG® - 6 Models to Fit Your Pumps

MODEL	PIPES	PRES.	FLOW	LENGTH	DIAM.	INLET PORT
WV-1/4™	2" - 4"	4k psi	3-8 gpm 11-30 lpm	2.0 in.	1.3 in.	1/4" npt & BSPP
WT-3/8™	3" - 6"	4k psi	5-12 gpm 20-45 lpm	3.0 in.	1.9 in.	3/8" npt & BSPP
WS-1/2™	4" - 8"	4k psi	8-20 gpm 25-75 lpm	4.4 in.	1.7 in.	1/2" npt
WH-1/2™ & 3/4™	6" - 18"	8k psi	10-45 gpm 40-170 lpm	7.5 in.	3.1 in.	1/2" or 3/4" npt or BSPP
WG-1™	8" - 36"	3k psi	50-80 gpm 190-300 lpm	9.1 in.	4.2 in.	1" npt or BSPP
WD 1-1/4™	8" - 36"	3k psi	80-120 gpm 300-450 lpm	9.1 in.	4.2 in.	1-1/4" npt or BSPP

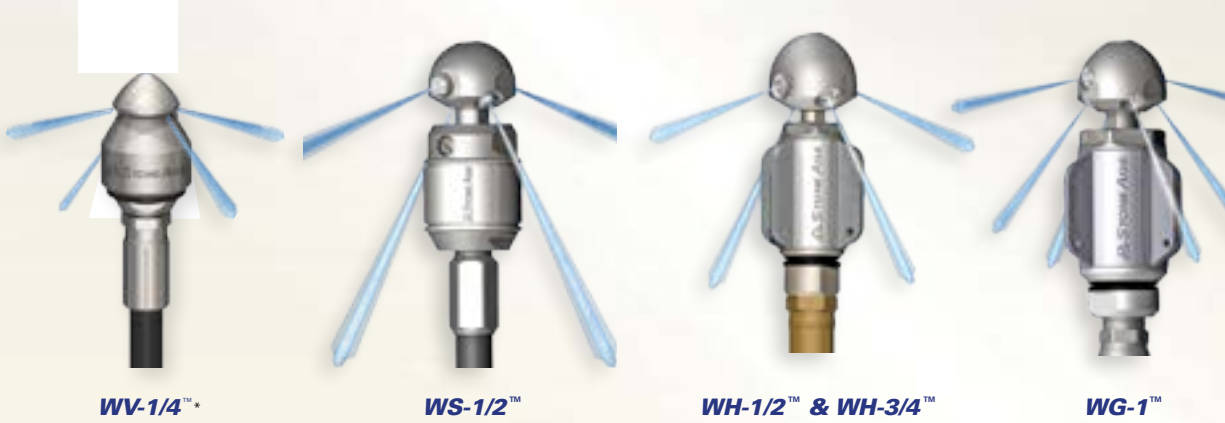




WARTHOG® Accessories

Optional Descaling Heads Maximize Wall Cleaning Power

For the models illustrated below this optional head allows you the flexibility to load nozzles into the standard jetting configuration for normal sewer cleaning, or switch nozzle locations for incredible wall cleaning power. Your **WARTHOG®** can be upgraded to the descaling head option easily. The difference in the jetting pattern is that two additional jet ports have been added at 105°. In addition, the front boring jet has been plugged to ensure maximum power is delivered to the scale removing jets. The result is enhanced removal of scale, tuberculation, corrosion products, soap and minerals.



WV-1/4™

WS-1/2™

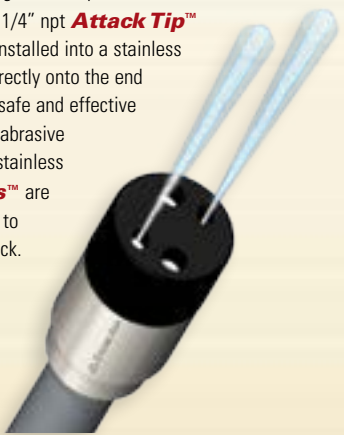
WH-1/2™ & WH-3/4™

WG-1™

Soft Dig Heads are Perfect for Hydro-Excavation

There is a rapidly growing technology within the vacuum truck industry called Hydro-Excavation, where contractors can utilize their vacuum trucks to replace manual digging. This is a real benefit for companies that need to locate utility lines without the dangers of heavy industrial equipment. **StoneAge®** designed a simple and inexpensive assembly with two 1/4" npt **Attack Tip™** nozzles and a protective guard installed into a stainless steel head. The head threads directly onto the end of your 3/4" npt and allows for safe and effective excavation. The guard prevents abrasive splashback from damaging the stainless steel head. The **Attack Tips™** are replaceable, allowing operators to change nozzles from truck to truck.

SD 100™



Super Centralizers

WARTHOG® Centralizers



Super Centralizers are available for all **WARTHOGS®** except the **WV-1/4™** and the **WT-3/8™**. These cages provide several benefits, including:

- Keeps tool centered in pipe
- Reduces wear on the tool
- Provides standoff for jets

Super Centralizers		
MODEL	Part #	Diameter
WS-1/2™	WS 084	4.5 in.
WH-1/2™ & WH 3/4™	WH 085	5.5 in.
WG-1™	WG 085	6.85 in.
WD 1-1/4™	WG 085	6.85 in.

Flushing/Accessories

WH-1/2™ & WH-3/4™ Specs

Flushing/Accessories



WARTHOG® WH-1/2™ and WH 3/4™

The **WH-1/2™** and the **WH-3/4™** are the same tool but offered with different inlet port sizes to match either 1/2" or 3/4" npt or BSPP.

WH-1/2™ & WH-3/4™ Service & Overhaul Kits

WH 600 - Service Kit

- 1 BJ 048-F Viscous Fluid, Fast - 6oz.
- 1 BJ 062-S Antiseize, 2g
- 1 GP 025-P2 Hex Socket Plug
- 1 TJ 011 Brass Seat
- 1 WH 012-O H.P. Seal & O-Ring

WH 602 - Seal Kit

- 1 TJ 011 Brass Seat
- 1 WH 012-O H.P. Seal & O-Ring

WH 612 - Tool Kit

- 1 TJ 064 Fill Tube
- 1 WH 105 Tool

WH 610 - Overhaul Kit

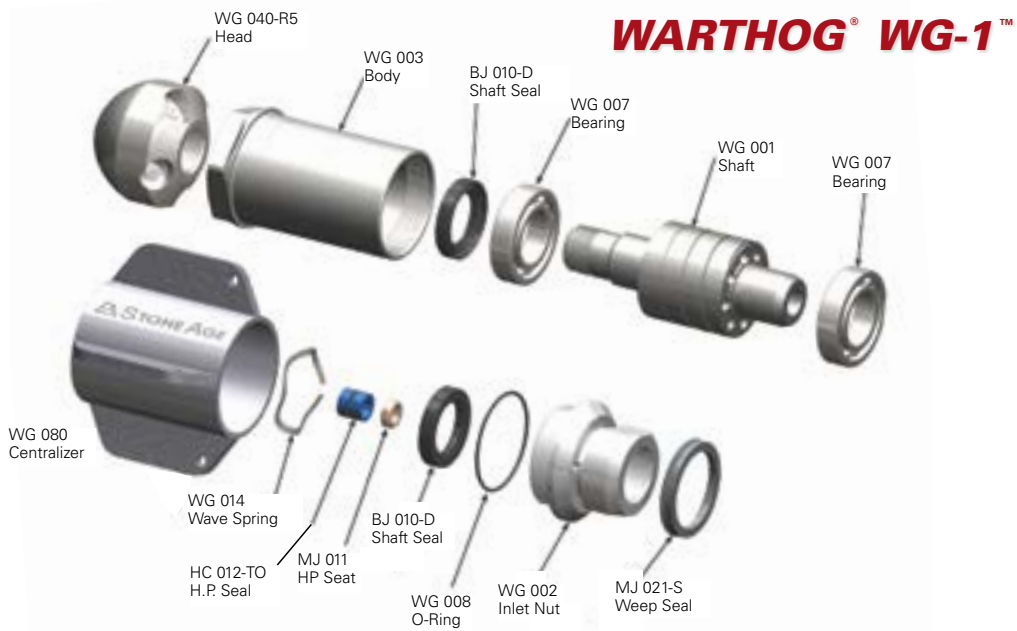
- 1 BJ 048-F Viscous Fluid, Fast - 6oz.
- 1 BJ 062-S Antiseize, 2g
- 1 RJ 008 O Ring
- 1 TJ 011 Brass Seat
- 1 WH 012-O H.P. Seal & O-Ring
- 2 TJ 007 Ball Bearing
- 2 WH 010 Shaft Seal
- 1 RJ 021-S Weep Seal
- 1 RJ 014 Wave Spring



© 2010 StoneAge, All Rights Reserved



WG-1™ & WD 1-1/4™ 8" - 36" Lines



Flushing/Accessories