



"The Standard of the Industry"



## NEW! WTR III

Wheeled / Tracked  
Transformer Transporter

2-in-1  
unit!



*Transform your transporter to accommodate varying pipe conditions!*

- Traverse varying pipe conditions with quick install of wheels or tracks
- Inspects 6" relined through 30" pipe
- Single point removal of wheels
- Optional high-traction tracks are available, easy to install
- Weighted adapters optically center the camera in each pipe size and increase bottom clearance
- Various wheel sets available to maximize performance in various pipe conditions
- Compact transporter enables traversal of offsets in small diameter pipe and entry into tight spaces
- Camera connects directly into transporter with protective carriage assembly
- Works with CUES OZ III pan and tilt zoom camera or CUES OZ III Nite Lite Pan and Tilt Camera
- WTR III base configuration includes wheels; optional tracks are available

*Adapt the  
transporter  
based on your  
needs!*



Go **GREEN** with  
**CUES Blue!**

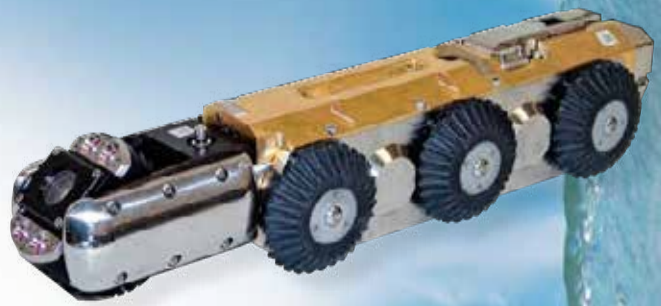
Improving your environment one pipeline at a time.



800.327.7791  
www.cuesinc.com  
salesinfo@cuesinc.com



"The Standard of the Industry"



## Compact Pipe Ranger

*Multi-Conductor Wheeled Transporter*

The Compact Pipe Ranger (CPR) is a lightweight, compact, and rugged steerable CCTV camera transporter that is used to inspect sanitary and storm sewers. It is made to traverse long distances and tough pipe conditions, and to facilitate ease of handling during insertion and retrieval.

The Compact Pipe Ranger (CPR) is designed to operate on a minimum of 1000' ft of multi-conductor TV cable to inspect 6" relined pipe through 30" diameter pipe. The Compact Pipe Ranger (CPR) includes full-proportional steering to traverse meandering pipe and 45 and 90 degree turns.

When assembled with the CUES OZIII zoom pan and tilt camera, the compact length enables the unit to negotiate most difficult entry conditions and standard sweeps. The superior pulling power of the CPR, combined with the optics and directional lighting of the compact OZ III zoom pan and tilt camera (with the ability to rotate in a 4" circle), creates video inspection quality that's unsurpassed in the industry.

Multiple wheel sets are available to maximize bottom-clearance, traction, and optimize camera position. Ease of operation is accomplished with one joystick control for all transporter and camera movements. A variable "cruise control" setting is available for transporter speed for hands-off operation!

### Features/Benefits:

- Optional mechanical or power camera lift is available to prevent the need for an operator to enter the manhole to position and reposition the camera height and to optically center the camera in varying pipe diameters
- Optional rear-viewing camera, which is mounted to the CPR transporter, is available to help avoid obstacles and potential tip-overs in the pipeline by providing visibility when retrieving the transporter or driving in reverse
- Superior pulling power
- Wheels can be installed or removed from a single point of contact
- 2-speed transmission doubles the torque of the transporter for large pipe inspections
- Locking bayonet-style rear bulkhead connector - durable/stable
- Operates in 6" relined pipe through 30" diameter pipe and larger
- Full proportional steering and can complete a 360 degree turn within its own radius
- Multiple wheel sets to accommodate your needs
- High-traction wheels are available for slippery PVC pipe
- Operates with CUES OZIII & Nite Lite III cameras, multi-conductor cable



*Go the distance with the Compact Pipe Ranger (CPR)!*



## COMPACT PIPE RANGER (CPR) Multi-conductor Wheeled Transporter



*Optional Mechanical  
Camera Lift*



*Optional Power  
Camera Lift*



*Optional Rear-Viewing  
Camera*

### Specifications

- Operates with CUES multi conductor systems
- Operates with the CUES OZ III zoom pan and tilt camera
- Designed to traverse sanitary sewers, storm drains and pipe with debris and silt
- Freewheel, powered reverse, forward variable speed control, all wheel drive
- Rugged, durable and sealed to eliminate water intrusion
- Provides clearance in a 6" diameter relined pipe; can inspect up to 30" diameter pipe and larger
- Two-speed transmission doubles the torque and maximizes traction in varying pipe conditions
- Can turn 360° within its own radius; pinpoint control maximizes the ability to traverse challenging pipe conditions
- Flight stick controller to operate the transporter, optional camera lift, and camera movements with one hand; provides operational simplicity
- Multiple wheel sets for small, intermediate, and large diameter pipes; optional high-traction steel wheels are available
- Rear swivel bulkhead connector minimizes strain on the cable connection during insertion and retrieval of the unit
- Compact camera/transporter length with optical zoom pan & tilt camera (OZ III) facilitates entry into small inverts, small manholes, dead end lines, and traversal of sweeps
- Full proportional steering control to traverse meandering pipe with 45° and 90° turns; minimizes transporter turnover in small diameter pipe



Compact Pipe Ranger in the 8" Configuration



Compact Pipe Ranger in the 6" Steel Configuration



Operates with CUES OZIII & Nite Lite III Cameras

## Pipe Ranger Multi and Single Conductor III Wheeled Transporters

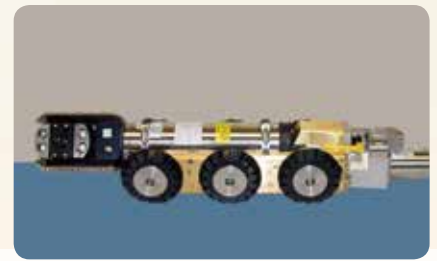
The Pipe Ranger is a rugged and versatile low-maintenance transporter that's specially designed to traverse silt, mud and debris commonly found in storm and sanitary sewers. Three standard wheel sizes and optional manual or electric camera lifts are available to maximize performance. Optional high traction tires are available for extreme slippery conditions.

The unit is designed to operate with 2000' of single-conductor cable or 1500' of multi-conductor cable to inspect 8" relined pipe through 60" diameter pipe. Its unique two (2) speed transmission doubles the torque of the unit to produce maximum pulling power in large diameter pipe when the 10.5" diameter tires are installed.

When assembled with a pan-and-tilt camera, the reduced length of the transporter / camera assembly can negotiate most difficult entry conditions and standard sweeps. The Pipe Ranger combined with the CUES OZ II optical zoom camera offers you one of the most compact assemblies in the industry. Optional steerable units with remote or manual camera lifts are also available.



*Operates with multi & single conductor systems!*



### Features & Benefits:

- Operates with CUES multi or single conductor systems
- Can operate on all truck-mounted and portable systems
- Operates with all CUES cameras: pan-and-tilt and optical zoom
- Designed to traverse storm drains and pipe with debris and silt
- Freewheel, powered reverse, forward variable speed control
- Rugged, durable and sealed to eliminate water intrusion
- Designed to provide clearance in a 7" diameter pipe; can inspect 8" relined pipe
- All-wheel drive is enclosed and sealed; all brass and stainless steel construction
- Two-speed transmission doubles the torque and maximizes traction in larger diameter pipe or in tough conditions
- Three wheel sets (3.7", 5.0", and 10.5" diameter) for small, intermediate, and large diameter pipes; optional high-traction wheels for slippery pipe
- Rear tip-up bulkhead connector minimizes strain on the cable connection during the inspection and retrieval
- Compact camera/transporter length with optical zoom pan & tilt camera (OZ II) facilitates entry into small inverts, small manholes, dead end lines, and traversal of sweeps
- Optional full proportional steering control to traverse meandering pipe with 45° and 90° turns; minimizes transporter turnover in small diameter pipe
- Inspection speed can be optimized to match pipe conditions and pipe size in 8" through 60" pipe





## Pipe Ranger

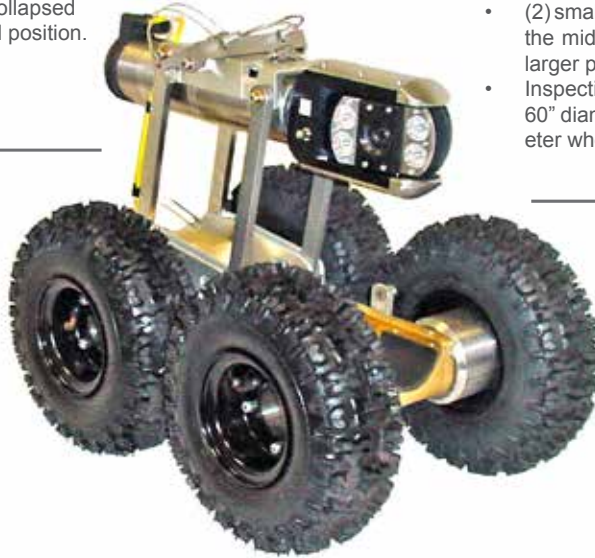
### Multi and Single Conductor III Wheeled Transporters

#### Camera Lift (optional)

- An optional manual or electric camera lift is provided for pipeline inspections ranging from 18" – 60" in diameter to prevent the need for an operator to enter the manhole during inspection and retrieval.
- Camera height varies from the collapsed position to 10.5" in the extended position.

#### Tires

- (6) wheels are available in various sizes to maximize traction in each pipe size
- (2) smaller diameter wheels remain affixed to the middle axle to help negotiate offsets in larger pipe configurations
- Inspections can be performed in pipes up to 60" diameter with the addition of large diameter wheels



"The Standard of the Industry"



Multiple wheel sets are available to maximize bottom-clearance, traction, and optimum camera position!

#### Transporter

- Base unit includes (6) driven wheels for 8"-15" pipe; (4) driven wheels via multiple sets for 18"-60" pipe
- Operates on 1500+ feet of multi-conductor video cable in suitable pipe conditions
- Includes a **two-speed** transmission to optimize traction by doubling the torque in difficult pipe conditions or in larger diameter pipe
- Comes equipped with self-propelled power forward, power reverse, and free wheel capabilities
- Constructed of brass, stainless steel, and aluminum alloy
- Unit is retrieved in the free wheel mode by the video cable reel to reduce the normal wear on the drive motor by 50%
- Compatible with pan and tilt, fixed view, straight line, and optical zoom pan and tilt cameras

## Optional Equipment



Rear-viewing Camera

- Optional full-proportional steering to traverse curved pipe, turn at 90 degree elbows with larger pipeline, turns at tees within larger pipeline, and conduct a complete 360 degree turn within its own radius
- Panel-mounted or stand-alone controller
- Manual or adjustable camera lift to optically center the camera in larger pipe
- Chevron tread or knobby tread for large diameter tires
- Rear-viewing camera to avoid obstacles when pulling back or driving in reverse (for use only with the multi-conductor version and must be used in conjunction with the manual or power lift assemblies)
- Lite Ranger (Pipe Ranger with an aluminum body) for customers that require a light-weight transporter
- High-traction tires for slippery pipe

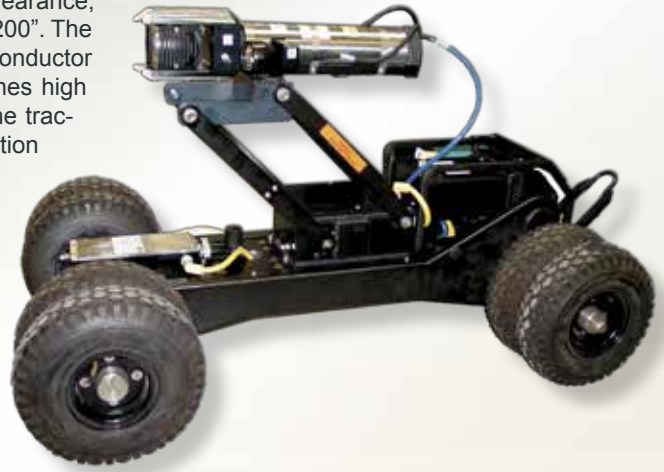
TV Systems



# Mudmaster

## Multi and Single Conductor III Wheeled Transporters

The Mudmaster is a camera transporter that's specifically designed with the necessary weight, power, high clearance, and all wheel drive for pipelines ranging from 24" to 200". The unit is designed to operate with 2000' of single-conductor cable or 1500' of multi-conductor cable and combines high ground clearance with pneumatic tires to provide the traction and camera stability that's required for operation under the most adverse pipeline conditions including high flow, deep mud, sand and large amounts of debris. Optional tandem wheels are available. The waterproof remote-operated camera lift can be inserted through a 19" diameter manhole with the camera in the lowest position to preclude the operator from confined space entry. This rugged all wheel drive robot can operate all CUES cameras, including OZ (Optical Zoom Pan and Tilt series) and Night Lite Pan and Tilt. Optional steerable units with remote or manual camera lifts are also available.



*Operates with multi & single conductor systems!*

### Features & Benefits:

- Operates with CUES multi or single conductor systems
- Can operate on all truck-mounted and portable systems
- Operates with all CUES cameras
- Four or eight (tandem) wheels provide greater traction in all types of pipe, under all conditions
- Matched weight and power to maximize efficiency and capability
- Simple dual-wheel installation and captured hardware
- Remote-operated adjustable camera lift (optional) to position the camera for best available picture; stable center of gravity when the camera lift is extended
- Inspects 24" through 200" lines
- Rugged, durable and sealed to eliminate water intrusion
- 255 watt light system, variable, adjustable, 3 lamps (2-lamps for single-conductor III units- 170 watts total)
- The unit has variable speed drive, power forward, power reverse, and freewheel capabilities
- Operates on 2000' (maximum) of single conductor cable; 1500' of multi conductor cable
- Fits through a manhole with an inside diameter of 19"
- Provide maximum traction on wet or dry surfaces through all types of sediment
- Optional full proportional steering control to traverse meandering pipe with 45° and 90° turns; minimizes transporter turnover in small diameter pipe
- Utilizes all-wheel drive in conjunction with a low center of gravity to traverse and steer through pipelines
- Longer wheel base to prevent accidental roll-over
- Dual motors to ensure adequate power for longer inspections
- High-clearance for operation in debris-filled pipes





# Mudmaster

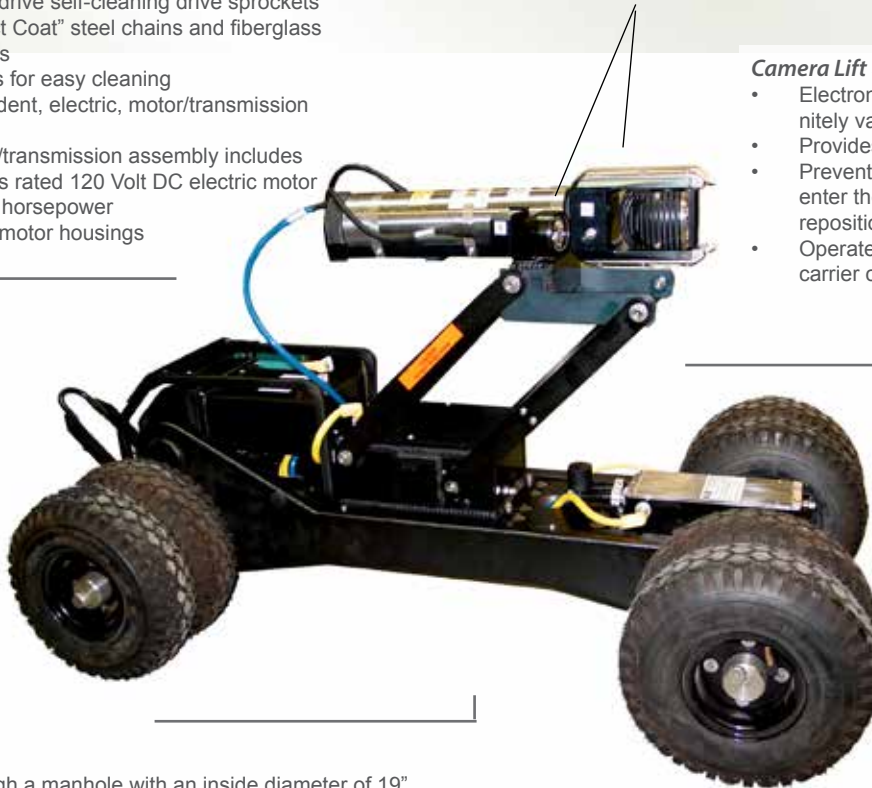
## Multi and Single Conductor III Wheeled Transporters

### Light Assembly (shown below with a SCIII single conductor unit)

- 2 each independent 85 watt long life light assemblies (170watts)
- Waterproof black anodized aluminum housing, replaceable plug-in bulb, defused lens and locking mount
- Wired to operate independently (in parallel) to preclude total light failure

### Drive System

- Permanent drive self-cleaning drive sprockets with "Perfect Coat" steel chains and fiberglass chain guards
- Flush drains for easy cleaning
- (2) independent, electric, motor/transmission assemblies
- Each motor/transmission assembly includes a continuous rated 120 Volt DC electric motor rated at 1/8 horsepower
- Waterproof motor housings



### Camera Lift (optional)

- Electronic, remote controlled, infinitely variable camera lift
- Provides a center-of-pipe view
- Prevents the need for an operator to enter the manhole to position and/or reposition the camera height
- Operated from the remote camera carrier controller

### Transporter

- Fits through a manhole with an inside diameter of 19"
- Can complete 360 degree turns on open ground
- Retrieve the camera carrier in the free wheel mode by the video cable reel
- Includes one set of (8) 10.5" knobby tires with optional 12" chevron tread tires
- Incorporates dual four wheel drive for max traction on wet/dry surfaces through all types of sediment
- Wheelbase of 16" W x 41.5" L when using 10.5" diameter semi-pneumatic tires
- Includes variable speed drive, power forward, power reverse, and freewheel capabilities

## Optional Equipment

- 425 watt light system, variable, adjustable with 5 lamps (multi-conductor only)
- Remote or manual camera lift to optically center the camera up to 60" diameter pipe
- Multiple wheel sizes to fit various pipe conditions; 12" diameter Chevron tires for maximum traction and ground clearance; optional liquid filled tires
- Optional full proportional steering control to traverse meandering pipe with 45 and 90 degree turns; minimizes transporter turnover in small diameter pipe



"The Standard of the Industry"

TV Systems



# CUES TV Systems

## Variable Weight Tracked Transporter

Ultra Shorty 21 offers the same quality and proven performance as the Ultra Shorty transporter but also provides a reduced length measuring under 21". This transporter can inspect 6" to 36" lines with major offsets and protruding laterals. Adapter blocks are available to optically center the camera in 30" to 36" lines. The Ultra Shorty 21 transporter combined with the CUES OZ II optical zoom camera offers you one of the most compact assemblies in the industry at only 28" achieving maximum clearance in 6" or 6" relined pipe. For added versatility, the Ultra Shorty 21 can be used with your Inspector General mini-system. A retro kit is available to convert the Ultra Shorty to an Ultra Shorty 21.

TV Systems



*One of the most compact assemblies in the industry!*

### Features & Benefits:

- Reduced camera/tractor length to 28" with optical zoom pan & tilt camera [OZ II]; allows line entry through inverts with limited space and traverses 22, 45, and 90 degree sweeps in smaller diameter lines
- Proven transmission with power forward, freewheel and power reverse; high speed retract without running over cable and easy to back out of a dropped manhole
- Weighted track extenders that lift to optically center camera; greater weight for increased traction
- Waterproof motor with bulkhead connector; protection against leaks and motor damage
- Self-cleaning drive sprockets; maximum performance in mud and sand
- Contoured high traction cleats; maximum pipe wall contact for greater traction
- Greater than 1" top clearance and 1" bottom clearance in 6" lines; navigates through offsets and protruding laterals
- Operates in 6" to 36" lines; maximum versatility and applications
- Dual track fasteners; increases track and cleat life
- Inspection speed can be optimized to match pipe size and conditions





## **NEW! Ultra Shorty III** **Variable Weight Tracked Transporter**

**Ultra Shorty III offers the most compact track transporter in the industry today!**

When used with the CUES OZ III optical zoom camera, the total length of the camera / transporter assembly is only 23.5" long, with a width of 4.25" when set up to inspect 6" pipe. Maximum clearance is provided for 6" and 6" relined pipe. The Ultra Shorty III can inspect 6" relined to 24" lines with major offsets and protruding



laterals. The Ultra Shorty III is provided with a built in protective housing and bulkhead connector to accommodate the mounting and direct connection of the CUES OZ III Zoom Pan and Tilt Camera. Weighted adapter blocks are available to optically center the camera, and increase traction and bottom clearance in 8" through 24" lines. For added versatility, the Ultra Shorty III with OZ III can be used with any multi-conductor system.

### *Maximize your advantage in 6" relined pipe!*

#### **Features & Benefits:**

- Reduced camera/tractor length to 23.5" with optical zoom pan & tilt camera [OZ III]; allows line entry through inverts with limited space and traverses 22, 45, and 90 degree sweeps in smaller diameter lines
- \* Built in connector and protective housing for direct insertion of the OZIII camera. No camera interface cables are required.
- \* Reduced width (4.25") enables full pan and tilt / zoom capabilities in 6" relined pipe
- Proven transmission with power forward, freewheel and power reverse; high speed retract without running over the cable and easy to back out of a dropped manhole
- Weighted track extenders to optically center the camera; greater weight for increased traction, increase bottom clearance as pipe diameter increases
- Waterproof motor with bulkhead connector; protection against leaks and motor damage
- Self-cleaning drive sprockets; maximum performance in mud and sand
- Contoured high traction cleats; maximum pipe wall contact for greater traction
- Inspection speed can be optimized to match pipe size and conditions
- Operates in 6" relined to 24" lines; maximum versatility and applications
- Dual track fasteners; increases track and cleat life



"The Standard of the Industry"

TV Systems



# LAMP II

## *Lateral & Mainline Probe II*

ACCOMPLISH A ONE-PASS MAINLINE INSPECTION WITH A SIMULTANEOUS ADJACENT LATERAL INSPECTION!

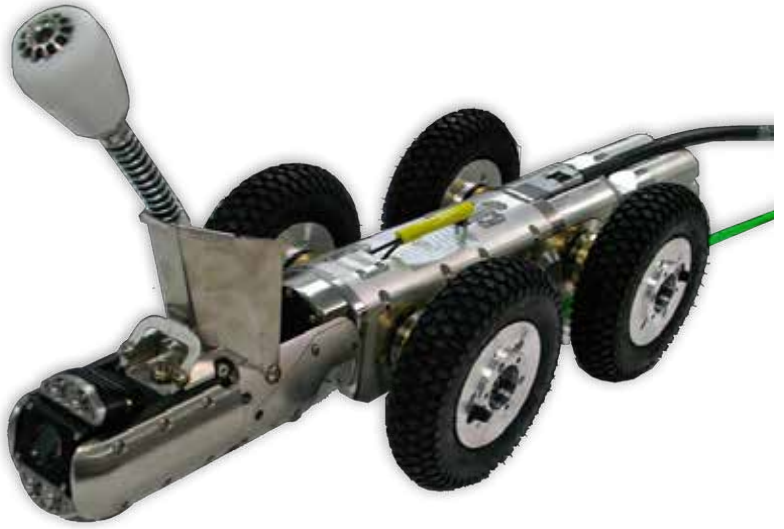
TV Systems

- ↪ Inspect Mainlines and Adjacent Lateral Services with One Inspection Run
- ↪ Lightweight / Compact Wheeled Unit! Pulls 1000 ft.
- ↪ Single Point Removal of Wheels
- ↪ Easily Fits Into a 6" Line

"The Standard of the Industry"



*NEW Fiberglass Cable Option*



### *Features and Benefits:*

- Inspect 6"-30" mainlines and 3"-8" lateral services
- Front-mounted pan and tilt / zoom camera (40:1 Optical / Digital Zoom):
  - Completes mainline inspection and monitors lateral camera
  - Articulates to facilitate invert entry
  - Automatic centering
- Lateral camera Includes built-in auto upright feature keeps the image stabilized at all times:
  - Can be quickly removed to use the unit as a mainline transporter with the front-mounted pan and tilt / zoom camera
- Built-in Sonde in the lateral camera for locating
- Maximum clearance in a 6" diameter line
- Supplied with 4 sets of Wheels for 6"-30" lines
- Optional wheel sets are available - steel based for high traction
- Optional chutes are available to increase pipe size range to 36"
- Traverses 45 and 90 degree bends in lateral services
- Quick removal and insertion of wheel sets
- NEW Fiberglass Cable Option: up to 120 ft. push cable
- Stainless Steel Cable Option: up to 100 ft. push cable
- Rear tip-up connector
- Compact length



*Maximum clearance in a 6" mainline!*



# LAMP II

## Rear Viewing Camera

The unique, illuminated & rear-viewing color camera can be used with steel and fiberglass systems.



The LAMP II rear-viewing, color camera is designed for use with the steel or fiberglass push systems for 6" and larger configurations. The rear view camera is mounted to the LAMP II to enable cable management and help avoid obstacles or potential turnovers when retrieving the unit or driving in reverse. The rear view camera can be retrofit to existing LAMP II units.



### Includes the following:

- a 12-pin to LAMP II rear-view adapter cable with locking connector is included with the assembly
- modular design uses two captive screws for quick installation
- LED light ring
- recommended for 6" and larger diameter pipe
- front/rear/lateral camera image is switched from the game pad or hand-held controller, truck panel, or power control unit, depending on the system configuration

**\*IMPORTANT:** The LAMP II Rear-View Camera requires K2 firmware version R021 or later.