

**ES-38 FOR SEWER LATERALS™**

**Underground Detection**



**electro<sup>scan</sup>inc.**



## THE NEXT GENERATION IN SEWER LEAK DETECTION

The ES-38 for Sewer Laterals™ is designed for scanning sewer laterals 3 to 8 inches in diameter, from a clean out, without the need to access the lateral from the main line. Electro Scan's proprietary technology measures the variations of electricity flowing through pipe defects, automatically transmitting defect location and relative size, accurate to within one (1) centimeter.

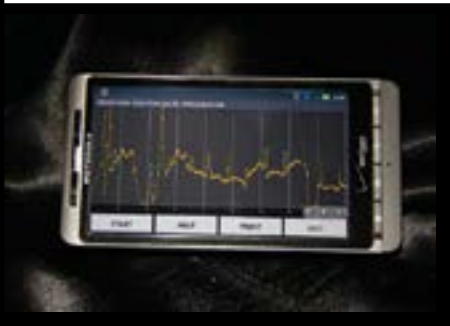
While electricity cannot pass through non-conductive pipe walls (e.g. brick, cement, clay, reinforced concrete, plastic, pipe lining resins, etc.), it will pass through any defect that can cause water leaks.

The ES-38 for Sewer Laterals, includes an ES-Probe Reel™, ES-Accessory Pack™, including items to facilitate recommended electrical grounding of the Electro Scan Probe, and ES-Smartphone Application, available for download from Google Play (i.e. formerly Android Market). Data is automatically sent via Bluetooth to the ES-Smartphone, where it is available for printing on an ES-Field Printer. Data is automatically transmitted to Electro Scan's CriticalSewers™ cloud application, where data is stored in a password-protected hosted environment, available for review, print, or export to Asset Management, GIS, and Hydraulic Modeling systems. Electro Scan Support Plans, priced separately.



ES-38 Probe	Qty	Description	Includes
	1	ES-38 Probe Reel	1 ES-38 Probe Reel (1' to 20' reels)
		Material	1 ES-38 Probe Reel (1' to 20' reels)
		Probe	ES-38 Probe Reel (1' to 20' reels)
		Probe Length	ES-38 Probe Reel (1' to 20' reels)
		Probe Diameter	ES-38 Probe Reel (1' to 20' reels)
		Probe Accuracy	ES-38 Probe Reel (1' to 20' reels)
		Probe Resolution	ES-38 Probe Reel (1' to 20' reels)
		Probe System	ES-38 Probe Reel (1' to 20' reels)
		Probe Support	ES-38 Probe Reel (1' to 20' reels)
		Probe Material	ES-38 Probe Reel (1' to 20' reels)
		Probe Grounding System	ES-38 Probe Reel (1' to 20' reels)
		Probe Operating & Reporting	ES-38 Probe Reel (1' to 20' reels)
		Cable	ES-38 Probe Reel (1' to 20' reels)
		Cable Length	ES-38 Probe Reel (1' to 20' reels)
		Weight	ES-38 Probe Reel (1' to 20' reels)
		Probe Storage	ES-38 Probe Reel (1' to 20' reels)
		Probe Safety	ES-38 Probe Reel (1' to 20' reels)
		Probe Operation	ES-38 Probe Reel (1' to 20' reels)
		Probe Environment	ES-38 Probe Reel (1' to 20' reels)
		Probe Maintenance	ES-38 Probe Reel (1' to 20' reels)
		Probe Accessories	ES-38 Probe Reel (1' to 20' reels)
		Probe Accessories (not included)	ES-38 Probe Reel (1' to 20' reels)

Electro Scan ES-38™ Complies with ASTM Standard F2550-06



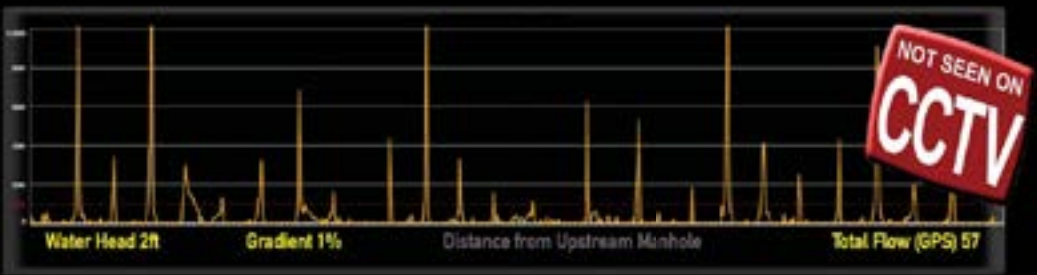
Optional Equipment	Qty	Description	Includes
	1	ES-38 Reel Push Rod	ES-38 Reel Push Rod (1' to 20' reels)
		Probe	ES-38 Reel Push Rod (1' to 20' reels)
		Probe Length	ES-38 Reel Push Rod (1' to 20' reels)
		Probe Weight	ES-38 Reel Push Rod (1' to 20' reels)
		Probe Operation	ES-38 Reel Push Rod (1' to 20' reels)
		Probe Maintenance	ES-38 Reel Push Rod (1' to 20' reels)
	1	Field Printer	Field Printer (1' to 20' reels)
		Field Printer Accessories	Field Printer (1' to 20' reels)
		Field Printer Operation	Field Printer (1' to 20' reels)
		Field Printer Maintenance	Field Printer (1' to 20' reels)

WECO Industries  
630 Eubanks Ct. Suite K  
Vacaville, California 95688  
Tel: 707-446-6661  
Website: <http://www.wecoind.com>



# ES-620 FOR SEWER MAINS™

Underground Detection



**electro<sup>scan</sup>inc.**



## THE NEXT GENERATION IN SEWER LEAK DETECTION

Underground Detection

The ES-620 for Sewer Mains™ is designed for scanning sewer pipes from 6 to 20 inches in diameter and has been especially designed to integrate with your CUES truck. Available as an add-on product for use with a customer's existing CCTV truck, the Electro Scan ES-620 for Sewer Mains™ is designed to easily and quickly "plug & play" with existine CCTV onboard electronics, removing TV cameras on-the-fly and substituting the ES-620 for Sewer Mains™. Data from the ES-620 Probe is transmitted via existing cable and onboard rotary distance encoders to display information in the Electro Scan Laptop application. Data is automatically transmitted to Electro Scan's CriticalSewers™ cloud application.

Electro Scan's proprietary technology measures the variations of electricity flowing through pipe defects, automatically transmitting defect location and relative size, curate within one (1) centimeter. While electricity cannot pass through non-conductive pipe walls (e.g. brick, cement, clay, reinforced concrete, plastic, pipe lining resins, etc.), it will pass through any defect that can cause water leaks.



Required accessories that are integral to the operation of the ES-620 for Sewer Mains™, include the ES-CCTV Integration Kit™, ES-620 Funnel Plug Jet Attachment™, ES-620 ByPass Plug, ES-Downstream Bypass Funnel Plug™, and ES-Side Wedge Pulley™. Electro Scan Support Plans, priced separately.

1. Certify New Pipe Construction and Lining Projects as "Leak Free"
2. Find Your Infiltration & Quantity in GPM.
3. Combine with CCTV and Make Sure You Fix Your Worst Pipe, First.



"Some Things Just Belong Together"



WECO Industries  
630 Eubanks Ct. Suite K  
Vacaville, California 95688  
Local: 707-446-6661

Website: <http://www.wecoind.com>

ES-620 for Sewer Mains™	Pipe Diameter	Diameter Material	4 to 20 inches (100 to 500mm)
	Length	Electrically non-conducting	10 ft. (3.05m) (Standard)
	Volume	2.5 to 3.0 cubic feet (0.07 to 0.08 cubic meters)	2.5 to 3.0 cubic feet (0.07 to 0.08 cubic meters)
	Scan Speed	Resolution	10-4 inches (250mm)
	Scan Resolution	Resolution System	0.5 inches (13mm)
	Scan Processing & Reporting	Smart Encoder	Smart encoder pulley, rugged to cable
	Power Supply	Smart Encoder	30 Amps (120/240V)
	Environment	Smart Encoder	See User Manual for environmental specifications
	Operation Temp.	Smart Encoder	See User Manual for environmental specifications
	Accessories	Smart Encoder	ES-CCTV Integration Kit (Optional by Mfg.) ES-CCTV Integration - Installation Services Funnel Plug Bypass Funnel Plug Jet Attachment Side Wedge Pulley Downstream Bypass Funnel Plug Jet Hose Extractor Retriever Hook Ground Strap Probe Controller and Ground Cable Reel (200' (60m)) Probe Reel to Ground Reel Connector Cable CriticalSewers™

All products, specifications, and availability subject to change without notice.

Electro Scan's ES-620 for Sewer Mains™ Complies with ASTM Standard F2550-06